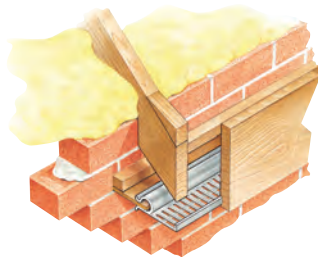


## TYPE SSV-RU

### Strip Soffit Ventilator with reduced upstand

- Regulation airflow compliance
- Integral fly screening
- Accepts different soffit thicknesses
- Self coloured - corrosion proof



#### Solution

The Type SSV-RU Strip Soffit Ventilator is designed for use with a standard soffit board. The RU designation refers to a reduced upstand of 5mm.

This permits the Type SSV-RU to be fitted into the back location groove of a fascia.

All other details and dimensions are as per the standard Type SSV. The airflow rating is 10,800mm<sup>2</sup> per metre run, making it suitable for use where the roof pitch is 15 degrees or above. The ventilation slots provide screening in accordance with regulations.

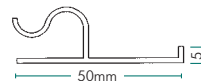
#### Bill of Quantity / Specification Wording

##### 900 Eaves Soffit Ventilators

Type SV-FL Flat Soffit Strip by Cavity Trays of Yeovil Somerset BA22 8HU (01935 474769). Colour \_\_\_\_\_. Secure to soffit and fascia. Metres run \_\_\_\_\_.

Product name	Type SSV-RU Strip Soffit Ventilator with Reduced Upstand
Size	2400 x 50 x 5mm
Free airflow rating	10,000mm <sup>2</sup> per running metre pitches above 15°
Colour	White Brown
Material	PVCU
Observations	Fits groove in most fascia backs

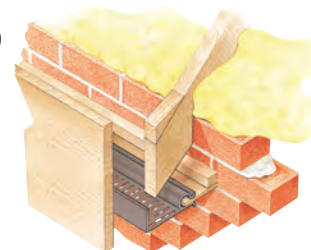
The SSVRU has a reduced upstand of 5mm. It may be fitted into the groove of a fascia.



## TYPE SSV-15

### SSV15 (for pitches below 15°)

- Regulation airflow compliance for pitches below 15 degrees
- Integral fly screening
- Accommodates different soffit thicknesses
- Self coloured - corrosion proof



#### Solution

The Type SSV-15 Strip Soffit Ventilator is designed for use with a standard soffit board on roof pitches below 15 degrees. The airflow rating is 25,000mm<sup>2</sup> per metre run, making it suitable for use where the roof pitch is 15 degrees or below.

The ventilation slots provide screening in accordance with regulations.

#### Bill of Quantity / Specification Wording

##### 900 Eaves Soffit Ventilators

Type SSV Strip Soffit Ventilator by Cavity Trays of Yeovil Somerset BA22 8HU (01935 474769). Colour \_\_\_\_\_. Clip to soffit and secure to fascia. Metres run \_\_\_\_\_.

Product name	Type SSV – 15 Strip Soffit Ventilator low pitches
Size	2400 x 80 x 20mm
Free airflow rating	25,000mm <sup>2</sup> per running metre pitches under 15°
Colour	White Brown Black
Material	PVCU
Observations	Predrilled fixing holes

Dimensions of the Type SSV15, which is for use on roofs below 15 degrees pitch and other pitches if the roof space is classified as accommodation. See technical observations.

