

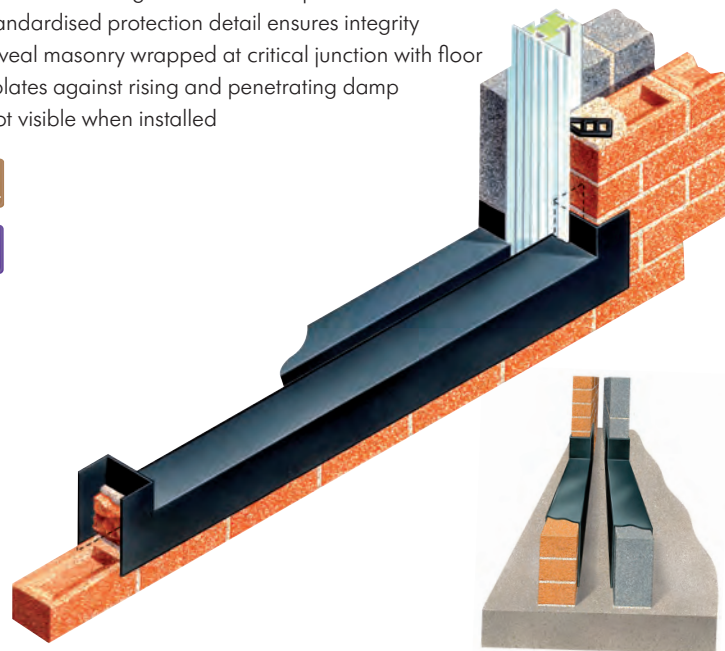
## Specifications

Product name - group	Type LTT
Cavity widths accommodated	All – width does not affect functionality
Dimensions	Available to suit all opening dimensions with 105mm thickness masonry skin Other skin thicknesses available
Bespoke options	Yes
Traditional construction compatible	Yes
Timber frame construction compatible	Yes
New work applications	Yes
Retrofit applications	Yes
Masonry skin styles	Split/variable style compatibility limited
Undulating masonry faces	Depends on extent of deviation
Congruent with other wall elements	Designed for Cavitycloser accompaniment
Arrested water evacuation	N/A - no horizontal arrestment
Thermal transmission of material	Negligible - 0.15
Material	Polypropylene DPC
Colour	Black
Extrudes / compresses under load	No
Pack size / weight	Varies pending design
CFC	CFC Free
ODP	Zero
Regulation compliance	Yes See Designers' Comments
May be used if cavity insulation present?	Yes with compliant insulation types
CAD downloads	Yes
Design considerations	Insulated sleeve may be introduced between adjacent Type LTTs – see range under Acoustic / Fire Sleeves.

## TYPE LTT

### Level Threshold Tray (Threshold Isolation Tray)

- Isolates damp masonry
- Easy interfacing of horizontal and vertical arrangements
- Increases flooring and insulation options
- Standardised protection detail ensures integrity
- Reveal masonry wrapped at critical junction with floor
- Isolates against rising and penetrating damp
- Not visible when installed



### Use

To protect level thresholds against damp and ensure the adjacent vertical closing and oversite membrane maintain protective integrity at the point of convergence.

## Solution

The Type LTT Level Threshold Tray encapsulates the opening masonry exposed to damp penetration or subject to damp infusion. In so doing the transmittance of damp from the exterior skin inwardly or from the skin upwardly is prevented and the flooring arrangement can safely integrate.

The Type LTT is available in a range of sizes to suit the masonry dimensions of all standard openings. A bespoke service operates for non-standard sizes.

When bedded on the exterior skin, the Type LTT acts a threshold DPC and extends downwardly over both faces of the masonry. At either end of the tray the protection rises, and wraps around the reveal faces including into the cavity. The positioning is identical on the inner skin, although the level of placement is commonly lower.

The Type LTT permits flooring, insulation and DPCs / membranes to continue over an inner skin and converge with an exterior skin that itself is isolated from dampness at the point of convergence.

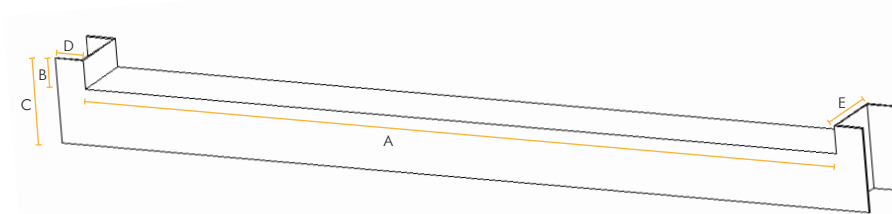
The oversite membrane is able to terminate against the downward projecting face of the Type LTT whilst the vertical closers to each side of the opening positively interface as shown.

On the external face the downward projecting section can be left in place and will be hidden by any close-fitting ramp/entry path. The reveal wraps may be trimmed to visually suit. Alternatively the section may be removed, leaving just a small protective bedding lip (as highlighted in BS 5628).

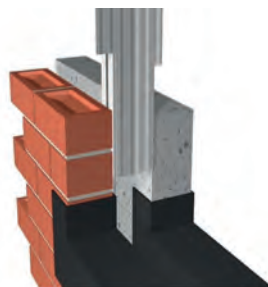
Where the opening is very wide, this product is supplied in two or more interconnecting sections for ease of carriage and installation.

## How to Order

Advise masonry to masonry opening dimension + skin thickness. State whether downward projections should be increased in size.



Type LTT trimmed back awaiting ramp



(Notching the closer face permits it to continue downwardly below the Type LTT level, so it terminates below opening level in the usual manner).

Dimensions		
	Set Dimensions	Amended Dimensions
A		
B	75mm	
C	225mm	
D	75mm	
E	105mm	

## Designers' Comments

BS 8102 provides a Code of Practice for the protection of below ground structures against water permeation. The Type LTT whilst technically a cavity wall DPC, performs two levels below and above promoting combined protection as highlighted under 6.2.2. An option acoustic/thermal barrier may be incorporated between Type LTT skins to raise the thermal integrity. See Radon section for thresholds with gas control measures.

## Bill of Quantity / Specification Wording

F30 Accessories/sundry items for brick/block/stone walling Clause 485

Openings in external cavity walls of building. Bed across threshold prior to introduction of door sill/frame. Manufacturer: Cavity Trays Ltd, Yeovil Somerset BA22 8HU Tel: 01935 474769

Type LTT Level Threshold Tray to suit opening width of \_\_\_\_\_ and cavity wall dimensions of \_\_\_\_\_.